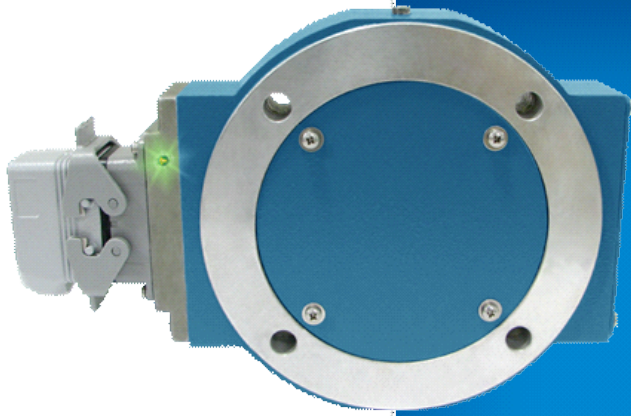


# Avtron AV850 SMARTach™ III Encoders



## Heavy Mill Duty Magnetic Modular Encoder, 8.5" C-Face Mount

### Time isn't Money. UPTIME is Money!

- ┆ Heavy Mill Duty
- ┆ Installation in Minutes!
- ┆ Up to 5000 PPR
- ┆ Removable Sensors
- ┆ Wide-Gap Technology, No Air Gap Adjustment Required
- ┆ Mounts Securely to Motor
- ┆ Outputs Fully Short Circuit Protected
- ┆ Self-Diagnostic LED & Alarm Output
- ┆ Sealed Electronics
- ┆ -40°C to +100°C Operation
- ┆ 3 Year No-Hassle Warranty
- ┆ Excellent for Gear Motors and Brake Applications

## AV850

SMARTach™ III Magnetic, Modular Encoder, 8.5" C-Face Mount

AV850 SMARTach III heavy mill duty modular magnetic encoders fit standard 8.5" FC-Face motors. Other models, from 115mm to 12.5", are available to fit other motor sizes, and hazardous duty models: [XR850](#) and [XPH8](#) intrinsically safe and [SV850](#) functional safety encoders are also available.

Quite simply, the AV850 is designed to eliminate encoder failures.

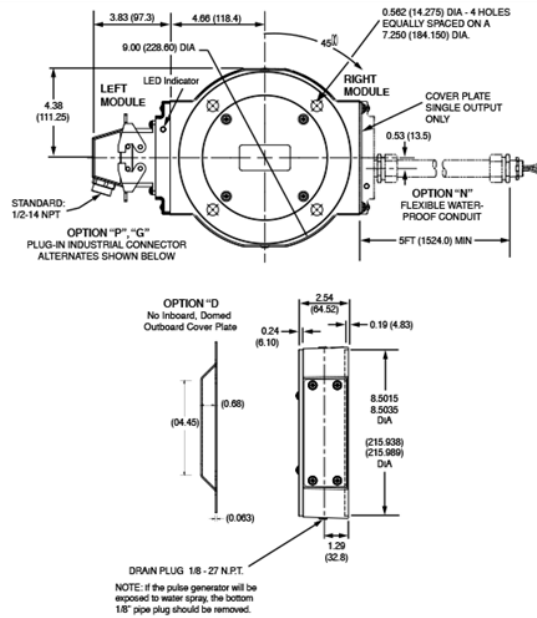
All AV850 electronics are fully encapsulated. There are no moving wearing parts. AV850 sensors locate over 4X farther from the rotor than the competition; no more sensor/rotor grinding!

Miswiring an encoder is common— and it shouldn't cost you time or money. The AV850 has full output short circuit and reverse voltage protection, plus surge protection. AV850 SMARTach III sensors digitally self-tune the outputs to eliminate drive trips caused by poor encoder signals. The universal 5-24V design drives longer cables and is protected against wiring errors.

**Adaptive Electronics:** At power-up you know you installed it right! The green LED tells you your AV5 Sensor is aligned with the rotor and reading signal. If at any time, the AV5 cannot produce consistent signals, the LED changes to red and the optional remote alarm contact activates. However, the encoder keeps working to give you time to schedule service. Even wiring errors and short circuits that cause an over-temp situation will be detected and indicated by changing the LED to orange.

If you think you need to replace your drives to end your encoder failures, try a better encoder instead. Specify AV850!

## OUTLINE DRAWING



## MORE AV850 ADVANTAGES

- SMARTach II sensors find problems before they cause failure
- Replaces Northstar/LakeShore RIM8500™, NexGen 8500; Avtron M193B, M285; GE AN-DG models
- Resists motor and brake interference noise
- Reverse voltage protection
- Mix and match any PPRs with any rotor
- Permits axial movement up to +/-0.100" [±0.254mm]
- Universal rotor for all GE CD style and many Reliance motors.
- Optional overspeed switch
- Optional shaft grounding

## AV850 SPECIFICATIONS

**Operating Power (Each Sensor):** 5-24V\*

**Current:** 100mA

**Output Format:** A Quad B with marker (A/A, B/B, Z/Z)

**Frequency Range:**

@5V, @1m cable, 250 kHz Max

@24V, @300m cable, #8 output, 45 kHz Max

**Maximum Cable Length:** 1000'

**PPR:** 4 - 50000\*\*\*

**Speed:** 6000 RPM Max\*\*\*\*

**Rotor Positioning:** Up to +/-0.100" movement/misalignment

**Sensor-Rotor Gap:** 0.045", +0.015/-0.040" [1.14mm±0.38/-1.0]

**Temperature:** -40° to 100°C (rotor -40° to 150°C peak)

**Electronics:** Fully Encapsulated, IP67\*\*

**Vibration:** 18G

**Shock:** 1 meter drop test

**Weight:** 9lbs. [4kg]; 11lbs. [5kg] dual

Check out our website for more detailed specifications, drawings, and installation instructions. [www.avtronencoders.com](http://www.avtronencoders.com)

\* Electrical specifications for SMARTach III model (serial #30,000 or higher), consult Nidec Industrial Solutions for earlier model specifications.

\*\* Certain connector options may reduce IP rating.

\*\*\* (PPR) Standard maximum PPR is 5000. Consult Factory with your application for PPRs up to 50,000.

\*\*\*\* (Speed) Maximum RPM may be limited for PPR > 2,500. Consult Factory with your application.

All dimensions are in inches [millimeters].

Specifications and features are subject to change without notice.

## SELECTION GUIDE

AV850 PART NUMBERS AND AVAILABLE OPTIONS													
<div></div>	<div></div>	<div></div>	<div></div>	<div></div>	<div></div>	<div></div>	<div></div>	<div></div>	<div></div>	<div></div>	<div></div>	<div></div>	
Model	Rotor Style	Shaft Size	Inboard & Outboard Cover Plates	Left Module				Right Module				Connector Options	Modifications
				Line Driver	PPR			Line Driver	PPR				
AV850			X- none D- no inboard, domed outboard cover plate B- inboard, thru outboard* F- no inboard, flat outboard N- inboard, flat outboard* T- no inboard, thru outboard*	X- none 6- 5-24V in/out (7272) 8- 5-24V in/out (HX) 9- 5-24V in, 5V out (7272)	X- none F- 60 C- 64 G- 100 H- 120 A- 128 L- 240 N- 256 P- 300 E- 360	B- 480 Q- 500 R- 512 S- 600 U- 720 V- 900 J- 960 W- 1000 Y- 1024 Z- 1200	2- 1500 6- 1800 3- 2000 4- 2048 5- 2500 D- 4096 8- 4800 9- 5000 0- special	X- none 6- 5-24V in/out (7272) 8- 5-24V in/out (HX) 9- 5-24V in, 5V out (7272)	X- none F- 60 C- 64 G- 100 H- 120 A- 128 L- 240 N- 256 P- 300 E- 360	B- 480 Q- 500 R- 512 S- 600 U- 720 V- 900 J- 960 W- 1000 Y- 1024 Z- 1200	2- 1500 6- 1800 3- 2000 4- 2048 5- 2500 D- 4096 8- 4800 9- 5000 0- special	000- none 003- Include analog signal converter (K661) 004- Super sensor shielding 4xx- Special PPR (see chart) 700- Large Motor Stator Adapter*	

+ Large motor stator adapter required if not previously installed. > N/A for End of Shaft rotor styles. • Rotor Style "T" only.

Rotor Style	Shaft Size							
T- Thru Shaft (inch)	B- 0.625	F- 1.125	K- 1.750	Q- 2.250	S- 2.771	Y- 3.375	G- 3.750	6- 4.500
C- Thru Shaft, Cam Screw (inch)	A- 0.750	H- 1.375	L- 1.875	P- 2.375	Z- 2.875	2- 3.421	4- 3.875	
	C- 0.875	M- 1.500	M- 2.000	R- 2.500	U- 3.000	V- 3.4375	1- 4.000	
	E- 1.000	J- 1.625	N- 2.125	T- 2.625	W- 3.250	3- 3.500	7- 4.250	
B- Thru Shaft (inch)	C- 1.250	A- 1.9375	B- 3.1250					
M- Thru Shaft (mm)	E- 19mm	J- 42mm	T- 70mm	4- 95mm	8- 110mm			
	F- 30mm	P- 60mm	Z- 19mm	5- 100mm				
D- Thru Shaft (mm)	C- 17mm	F- 30mm	K- 45mm	Q- 65mm	Y- 180mm	D- 93mm		
	E- 19mm	J- 42mm	P- 60mm	S- 70mm	Z- 90mm			
E- End of Shaft	F- 1.125 GE CD180-320		P- 2.375 GE CD400		2- 2.875 GE CD500		9- GE CD6000, 6100, 6200, 6700, 6800, & 6900	
H- End of Shaft for Grounding Kit	N- 2.125 GE CD360		Q- 2.250 GE CD444/505E					
U- Universal with End of Shaft	F- 1.125 GE CD180-320		9- GE CD6000, 6100, 6200, 6700, 6800, & 6900		Y- GE CD4600, 4700, 8500, & 8600*		U- Universal (includes 1 Rotor and Shaft adapters for all motors except Q, R, Z & 4)	
G- Universal with Grounding Kit	N- 2.125 GE CD360		V- GE CD4300, 4400, 5400, 6400 & 6500*		Z- GE CD680- ABB 95mm		Q- GE CD444/505E*	
Q- EOS Adapter for Stacked Encoders	P- 2.375 GE CD400		W- GE CD4500, 7500, 7600*					
	2- 2.875 GE CD500							
	R- GE CD507, 509							
K-Keyway Thru Shaft, Cam Screw (inch)	E- 1.000							
X- no rotor	X- no rotor							



Nidec Industrial Solutions  
243 Tuxedo Avenue - Cleveland, Ohio 44131

encoderhelpdesk@nidec-industrial.com  
+1 216-642-1230 - [www.avtronencoders.com](http://www.avtronencoders.com)



Features and specifications are subject to change without notice.  
EU-SMART™, SMARTSafe™, SMARTTach™, THIN-LINE™, WIDE-GAP™,  
SAFETach™ and BULLSEYE32™ are trademarks of Nidec Industrial Solution.  
All other trademarks and registered trademarks are the property of their  
respective owners. Nidec Industrial Solutions' standard warranty applies.  
All dimensions approximate.